

CONSERVED CHARGE FLUCTUATIONS IN THE CHIRAL LIMIT*

MUGDHA SARKAR, OLAF KACZMAREK, FRITHJOF KARSCH
ANIRBAN LAHIRI, CHRISTIAN SCHMIDT

Fakultät für Physik, Universität Bielefeld, 33615 Bielefeld, Germany

(Received November 25, 2020)

We study the signs of criticality in conserved charge fluctuations and related observables of the finite temperature QCD at vanishing chemical potential, as we approach the chiral limit of two light quarks. Our calculations have been performed on gauge ensembles generated using the Highly Improved Staggered Quark (HISQ) fermion action, with pion masses ranging from 140 MeV to 55 MeV.

DOI:10.5506/APhysPolBSupp.14.383

1. Introduction

Understanding of the phase diagram of QCD in the plane of temperature and various chemical potentials is one of the primary goals of lattice QCD calculations and the heavy-ion collision experiments at RHIC and the LHC. The temperature variation at zero chemical potential is being explored at the LHC and studied extensively using lattice techniques due to the absence of the infamous sign problem. At physical quark masses, there exists a chiral crossover at a temperature T_{pc} around 157 MeV [1, 2]. A schematic phase diagram of QCD with an additional axis for degenerate light (up and down) quark masses is shown in Fig. 1 [3]. In the figure, the dotted lines along the horizontal and vertical axes correspond to the plane of physical quark masses and the dashed line is the chiral crossover line which ends at a critical end point T_{cep} , which is being actively pursued in experiments.

The chiral limit, however, is not accessible to experiments and can only be studied via theoretical techniques. The spontaneous symmetry breaking of the exact $SU(2) \times SU(2)$ symmetry in the chiral limit of two light quarks is expected to be a phase transition belonging to the universality class of 3d $O(4)$ spin model [4]. There exists an alternative scenario where the chiral

* Presented by M. Sarkar at the on-line meeting *Criticality in QCD and the Hadron Resonance Gas*, Wrocław, Poland, July 29–31, 2020.

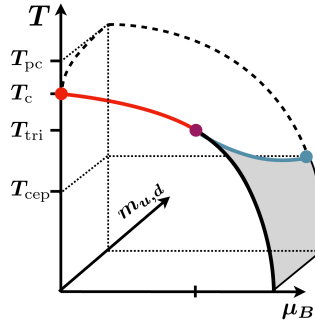


Fig. 1. Schematic phase diagram of QCD in the space of temperature T , baryon chemical potential μ_B and light-quark masses $m_{u,d}$ [3].

crossover turns into a first order transition as we move towards the chiral limit, through a $Z(2)$ critical point at an intermediate light-quark mass value [4, 5]. The order and nature of the chiral phase transition is still not clear beyond doubt. Recently, the phase transition temperature T_c was found to be 132^{+3}_{-6} MeV in Ref. [6]. Recent works have shown evidences which imply that the $O(4)$ scenario is favored [6–9]. In this work, we thus consider only the $O(4)$ universality class and try to understand the imprint of this criticality on thermodynamic observables, in particular on conserved charge fluctuations. The importance of these effects in the cumulants with regard to experiments has been discussed in Ref. [10].

The plan of these proceedings is as follows. After the brief introduction, Sec. 2 discusses the theoretical framework of studying universal critical phenomena and introduces the observables we are interested in. Our numerical setup is briefly summarized in Sec. 3 followed by our results in Sec. 4. We conclude and present our future directions in Sec. 5.

2. Critical behavior in the chiral limit

According to Wilson’s renormalization group (RG) theory, the effective Hamiltonian of a theory in the space of all possible couplings consists of “energy-like” terms which respect the symmetry and “magnetic-like” terms which break the symmetry. In QCD, the temperature T and chemical potentials μ_X for different conserved charges $X =$ baryon number B , electric charge Q , strangeness S, \dots would thus be energy-like couplings with respect to the chiral phase transition, whereas the light-quark mass $m_l \equiv m_{u,d}$ would be the magnetic-like coupling.

In the vicinity of a phase transition, the imprint of the criticality in thermodynamic quantities can be expressed as singular or non-analytic universal contributions. The starting point of the discussion is writing down the log-

arithm of the partition function *i.e.* the free energy density or the pressure, close to a phase transition using generalized scaling laws [11]

$$\frac{1}{T^4} f(T, \vec{\mu}, m_l) = \frac{1}{VT^3} \ln Z(T, \vec{\mu}, m_l) = h^{(2-\alpha)/\beta\delta} f_f(z) + f_{\text{reg}}(T, \vec{\mu}, m_l), \quad (1)$$

where V is the system volume and f_{reg} denotes the regular non-critical contributions which are particular to the theory, QCD in our case. The non-analytic contribution is expressed in terms of a generalized energy-like coupling, the reduced temperature t and a magnetic-like coupling h , written up to leading order near the critical point as

$$t = \frac{1}{t_0} \left(\frac{T - T_c}{T_c} + \kappa_2^X \left(\frac{\mu_X}{T} \right)^2 \right), \quad h = \frac{1}{h_0} \frac{m_l}{m_s}. \quad (2)$$

These dimensionless couplings are defined such that the phase transition occurs at $t = h = 0$. Since we are interested in the chiral phase transition at chemical potential $\mu_X = 0$, this corresponds to temperature $T = T_c$ and light-quark mass $m_l = 0$. The strange quark mass m_s is used in h to get rid of multiplicative mass renormalization factors in order to obtain a well-defined scaling field in the continuum limit. It is important to note that m_s does not break the two-flavor chiral symmetry group and, in principle, can also be included in the definition of t . The dimensionless t_0 and h_0 are non-universal constants. In the singular term in Eq. (1), $f_f(z)$ is a universal scaling function of the free energy with the scaling variable z being a particular combination of the t and h couplings, $z \equiv t/h^{1/\beta\delta}$. Depending on the universality class, the critical exponents α, β and δ determine the singular behavior in the chiral limit, $h \rightarrow 0$.

The conserved charge fluctuations are obtained as derivatives of the free energy density f w.r.t. the corresponding chemical potentials and are, therefore, energy-like observables. At zero chemical potential, the expressions for the singular parts in these cumulants can be obtained from Eq. (1) as

$$\chi_{2n}^X = - \frac{\partial^{2n} f / T^4}{\partial (\mu_X / T)^{2n}} \Bigg|_{\mu_X=0} \sim - (2\kappa_2^X)^n h^{(2-\alpha-n)/\beta\delta} f_f^{(n)}(z), \quad (3)$$

where $f_f^{(n)}(z)$ is the n^{th} derivative w.r.t. the scaling variable z . Note that the odd order cumulants are zero. From Eq. (2), it is easy to see that a single temperature derivative yields a singular part the same as the one obtained after a double chemical potential derivative. Therefore, if the regular contributions are small enough, the second and fourth order conserved charge fluctuations would behave like energy density and specific heat, respectively. As one expects the chiral phase transition to belong to the O(4) universality

class, one can plug in the O(4) critical exponents in the above-mentioned cumulants. Since α is negative¹, one finds that the second and fourth order fluctuations remain finite in the chiral limit, whereas the sixth and higher order fluctuations diverge. The scaling behavior of the universal non-analytic contributions of χ_4 and χ_6 obtained from 3d O(4) spin model calculations are shown in Fig. 2, which have been taken from Ref. [10]. The plots show the variation of the singular parts w.r.t. the reduced temperature for different h . It can be clearly seen in the left plot that the singular part of χ_4 does not diverge in the chiral limit $h \rightarrow 0$ but instead becomes zero at T_c with a characteristic spike. On the other hand, the sixth order cumulant χ_6 has a positive and negative peak which diverge in the chiral limit. We will confront these expectations with our numerical findings.

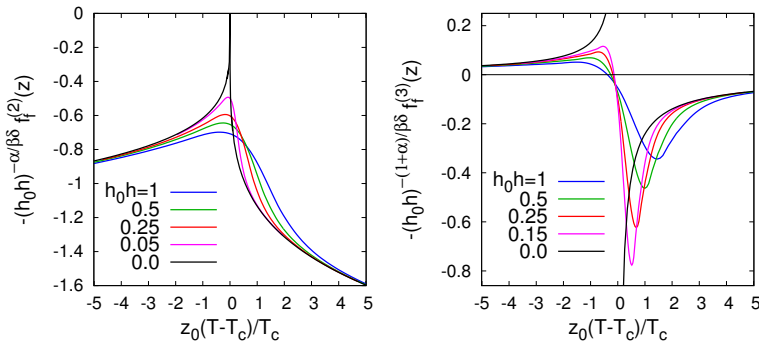


Fig. 2. Scaling behavior of the scaled singular parts of fourth (left) and sixth (right) order fluctuations as a function of the reduced temperature scaled by $z_0 \equiv h_0^{1/\beta\delta}/t_0$. The figure has been taken from Ref. [10].

It is also interesting to look at the “mixed” observables which are derivatives of the free energy with respect to both the energy-like and magnetic-like couplings. In contrast to energy-like observables, mixed quantities are divergent already at second order. For example, consider the second order conserved charge fluctuation

$$\chi_2^X = -A\kappa_2^X H^{(1-\alpha)/\beta\delta} f'_f(z) + \chi_{2,\text{reg}}^X, \tag{4}$$

where we move the factor of non-universal constant h_0 into A by defining $H \equiv m_l/m_s = h_0 h$ and $\chi_{2,\text{reg}}^X$ denotes the regular terms. Taking a H -derivative, one obtains the second order mixed susceptibility

$$\frac{\partial \chi_2^X}{\partial H} = A\kappa_2^X H^{(\beta-1)/\beta\delta} f'_G(z) + \frac{\partial \chi_{2,\text{reg}}^X}{\partial H}, \tag{5}$$

¹ The fourth order cumulant would diverge for the Z(2) universality class as α is positive.

where f_G is a universal scaling function related to f_f as $f_G(z) = -(1 + 1/\delta)f_f(z) + (z/\beta\delta)f'_f(z)$. The observable has a moderate divergence, *i.e.*, $H^{(\beta-1)/\beta\delta} = H^{-0.34}$ in the chiral limit.

3. Numerical setup

Our calculations have been done on gauge ensembles generated by the HotQCD Collaboration with the Highly Improved Staggered Quark (HISQ) fermion discretization and the tree-level Symanzik-improved gauge action. Part of these ensembles have been recently used in the determination of the chiral phase transition temperature T_c [6] and in studying the sensitivity of the Polyakov loop to the chiral phase transition [8]. Keeping the strange quark mass m_s fixed at its physical value, the gauge configurations have been generated with light-quark masses $m_l = m_s/27, m_s/40, m_s/80$ and $m_s/160$, corresponding to pion masses 140 MeV, 110 MeV, 80 MeV and 55 MeV, respectively. The measurements have been done in the largest available volumes at one value of lattice spacing, $a = 1/8T$, *i.e.*, at fixed lattice temporal extent $N_\tau = 8$.

4. Results

At the outset, we mention that since our work has been done with staggered quarks at finite lattice spacing, the relevant universality class would be that of 3d O(2) spin models. Hence, we use the O(2) critical exponents which are quite close to O(4) and the qualitative conclusions should remain the same.

We start with the results of the second order conserved charge fluctuations, shown in the left plots of Figs. 3, 4 and 5. In the scaling regime, the second order chemical potential derivative would behave like a single deriva-

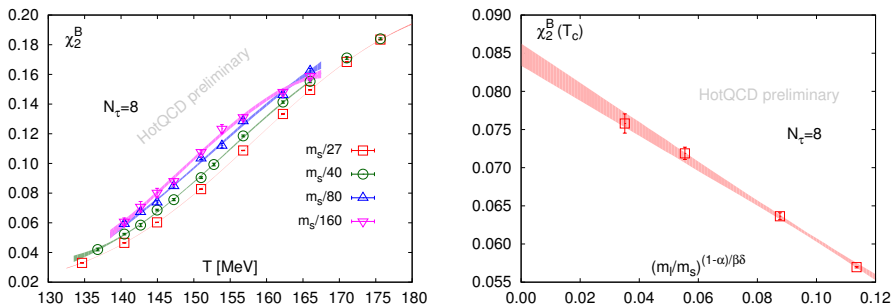


Fig. 3. Left: Second-order net-baryon number fluctuations as a function of temperature for different H values. Right: Linear fit of $\chi_2^B(T_c^{N_\tau=8})$ as a function of $H^{(1-\alpha)/\beta\delta}$ using O(2) critical exponents.

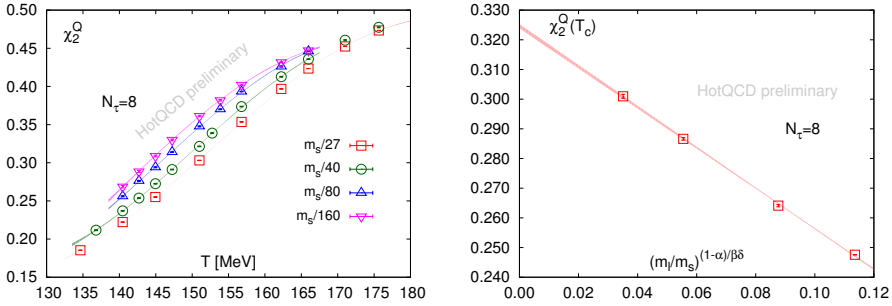


Fig. 4. The same as Fig. 3 but for electric charge fluctuations.

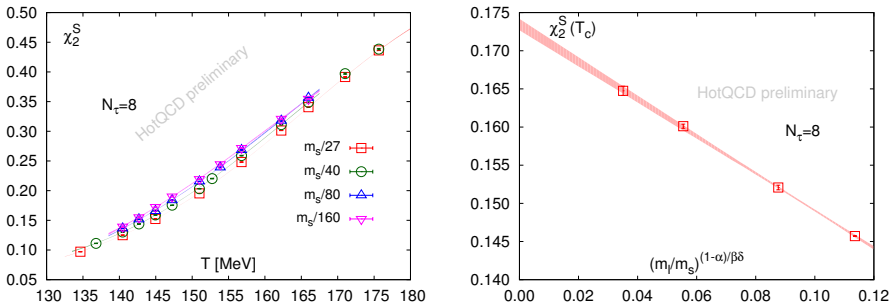


Fig. 5. The same as Fig. 3 but for strangeness fluctuations.

tive w.r.t. temperature, *i.e.*, like an energy density, if the singular part has a dominant contribution. It is possible to estimate the singular contribution in these quantities by extrapolating the value of the function in the chiral limit at a given temperature [11]. Setting $T = T_c$ at any given light-quark mass in Eq. (4), we have

$$\chi_2^X(t = 0, H) = -A\kappa_2^X H^{(1-\alpha)/\beta\delta} f_f^{(1)}(0) + \text{const. reg. term} + \mathcal{O}(H^2) . \quad (6)$$

We see that the leading mass dependence is given by the critical exponents in the singular term, followed² by H^2 . For $O(N)$ and $Z(2)$ universality classes, the combination $(1 - \alpha)/\beta\delta$ is positive and < 1 , thus, the singular term vanishes in the chiral limit. Using the T_c value extracted in [6] for $N_\tau = 8$, we can plot $\chi_2^X(T_c, H)$ versus $H^{(1-\alpha)/\beta\delta}$, as shown in the right plots of Figs. 3, 4, 5. For small enough H , one would expect a linear dependence, which is what we find already from physical light-quark masses within errors. From the intercept of the linear fit which denotes the constant regular term in Eq. (6), one can obtain the singular contribution at physical quark mass

² The free energy density is even in H .

as $\chi_2^X(T_c, H = 0) - \chi_2^X(T_c, H = 1/27)$, up to leading order. We have listed the singular contributions for physical quark mass at $T_c^{N_\tau=8} = 144$ MeV in Table I.

TABLE I

Approximate singular contributions to various χ_2^X at $T = T_c$ at physical light-quark mass $m_l = m_s/27$ at lattice temporal extent $N_\tau = 8$.

Singular contribution at physical mass	
$\chi_2^B(T_c)$	$\sim 50\%$
$\chi_2^Q(T_c)$	$\sim 30\%$
$\chi_2^S(T_c)$	$\sim 20\%$

From the singular contributions estimated above, one can get an idea about the curvature of the chiral transition line in the chiral limit. The ratios of the curvature coefficients κ_2^X for different chemical potentials can be obtained directly from the ratio of the corresponding singular contributions as everything else cancels out (see Eq. (6); note that $f_f^{(1)}(0)$ is a constant universal number). The preliminary estimates of the ratios κ_2^Q/κ_2^B and κ_2^B/κ_2^S are 2.6 and 1.0 respectively. These values are quite close to the corresponding ratios of the curvatures of the crossover line at physical quark masses, 1.8(8) and 0.9(4), respectively, obtained in Ref. [1]. This indicates that the curvature of the crossover line remains almost unchanged as one goes towards the chiral limit.

Next, we discuss the qualitative features of the 4th order conserved charge fluctuations. The singular part of χ_4^X would vanish at T_c as $h^{0.01}$ with O(2) exponents and thus, no divergence would be present in the chiral limit. The appearance of the characteristic spike in the full quantity, as seen just for the singular part in the left plot of Fig. 2 is, therefore, dependent on the relative size of the regular term at a given light-quark mass m_l . Our preliminary results for the fourth order electric charge fluctuation χ_4^Q as a function of temperature is shown in the left plot of Fig. 6. With decreasing light-quark mass m_l , a spike seems to be developing near T_c . The plot for χ_4^B shows similar features but is noisy and requires more statistics. The similar plot for strangeness, however, is quite different with a monotonically increasing behavior. This happens most likely due to a relatively large contribution of the regular terms, as seen already in Table I for χ_2^S .

According to O(2) or O(4) universality, the 6th and higher order fluctuations are divergent in the chiral limit and should provide a strong evidence for criticality. Due to a diverging singular part, the regular terms should be less relevant towards the chiral limit. However, these observables require

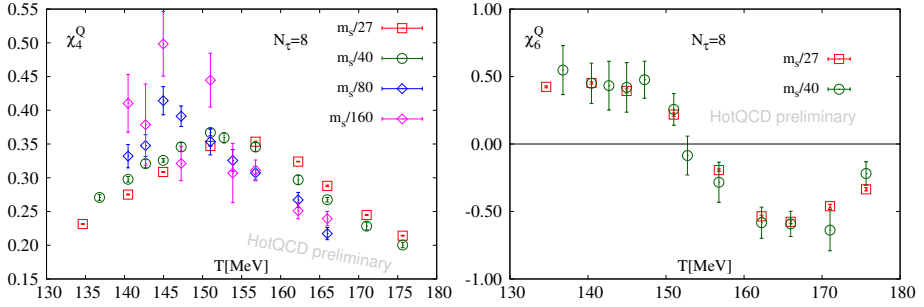


Fig. 6. Left: The fourth order cumulant of electric charge fluctuations, χ_4^Q as a function of temperature for different H values. Right: The sixth order cumulant of electric charge fluctuations, χ_6^Q versus temperature at two H values.

large statistics, and lattice calculations are increasingly expensive at smaller masses. Our preliminary result for χ_6^Q in the right plot of Fig. 6 shows features similar to that of the universal singular term in the right plot of Fig. 2. At first glance, it might look like there is no divergence with decreasing mass in the figure but one must keep in mind that firstly, the regular parts can still be appreciable at these masses and second, the ratio of the peak heights for $H = 1/27$ and $H = 1/40$ expected from $O(2)$ singular parts is only about 1.26, which is not too far from the actual data. The relatively high positive part at lower T compared to the negative peak at high T for χ_6^Q , in contrast to Fig. 2 (right), is probably due to large regular contributions to the electric charge fluctuations from pions as predicted from hadron resonance gas (HRG) calculations.

Finally, we discuss results from two mixed observables: $\partial\chi_2^S/\partial H$, the light-quark mass derivative of the strangeness fluctuation χ_2^S , and $\chi_{ts} \equiv m_s \partial \langle \bar{\psi}\psi \rangle_s / \partial m_l$, the mass derivative of the strange quark chiral condensate (the dimensionless strange-chiral condensate is defined as $\langle \bar{\psi}\psi \rangle_s = \frac{1}{4} \text{tr} M_s^{-1}$, where M_s is the strange quark, staggered fermion matrix). Both of these quantities have the same divergence in the singular part as discussed towards the end of Sec. 2 but with different non-universal factors. The regular terms in these quantities are also undoubtedly different. It is worthwhile to point out again that the strange quark condensate does not break the 2-flavor chiral symmetry and hence is an energy-like observable. We show these two susceptibilities in the left plots of Figs. 7 and 8. An interesting way to look at the scaling behavior is to rescale the quantities with $H^{-(\beta-1)/\beta\delta}$ and plot it against the scaling variable z , as shown in Figs. 7 (right) and 8 (right). Apart from regular contributions, the rescaled observable is proportional to the universal scaling function $f'_G(z)$ (see Eq. (5)). The data seems to fall on top of each other in the figures with some deviations which can be taken

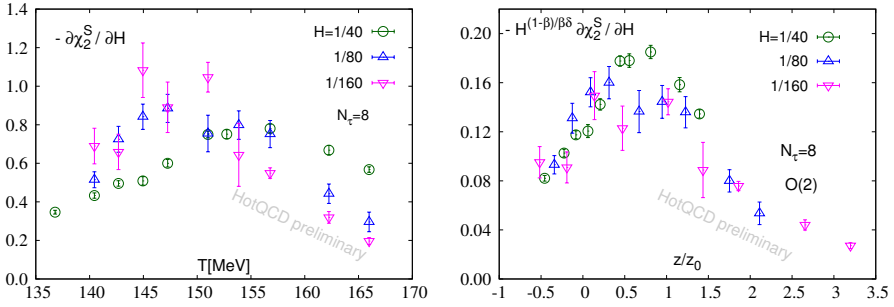


Fig. 7. Left: The H -derivative of the second order strangeness fluctuation χ_2^S as a function of temperature at different masses. Right: The derivative, rescaled with $H^{(1-\beta)/\beta\delta}$, plotted as a function of $z/z_0 = H^{-1/\beta\delta}(T - T_c)/T_c$ for fixed values of H . Apart from regular contributions, the rescaled quantity is proportional to the universal scaling function $f'_G(z)$.

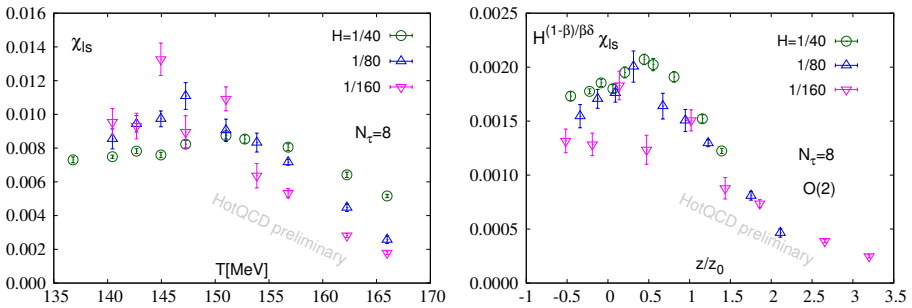


Fig. 8. The same as Fig. 7 but for H -derivative of strange chiral condensate, $\chi_{ls} \equiv m_s \partial \langle \bar{\psi} \psi \rangle_s / \partial m_l$.

care of by considering regular terms. This clearly shows the universal scaling behavior in these quantities already at physical quark masses. Although seemingly different, quantities like χ_{mP} , the H -derivative of the Polyakov loop studied in Ref. [8], behave exactly the same as the mixed susceptibilities discussed above, as expected from universal scaling behavior. It is possible to do a similar analysis of the regular and singular parts of the above-mentioned mixed quantities, as has been done in Ref. [8].

5. Conclusions and outlook

To summarize, the fluctuations of conserved charges at finite lattice spacing seem to be consistent with chiral phase transition belonging to $O(2)$ universality class and, therefore, to $O(4)$ in the continuum limit. They exhibit

expected energy-like behavior with respect to chiral phase transition. Even strangeness fluctuations and strange quark condensate behave as energy-like quantities in the 2-flavor chiral limit. The singular contributions can be estimated for different observables and may be used to determine the curvature coefficients of the chiral critical line. In particular, our analysis for the second order fluctuations at physical pion masses show a considerable singular contribution. We intend to do a future comparison with HRG at smaller masses to understand the interplay of singular and regular parts. A more quantitative understanding of the mixed susceptibilities and conserved charge susceptibilities will be obtained in future through a scaling analysis following Ref. [8]. The work is under progress and more statistics are being generated at lower masses in order to achieve proper continuum and thermodynamic limits.

This work was supported by the TU Deutsche Forschungsgemeinschaft (DFG) Proj. No. 315477589-TRR 211; the German Bundesministerium für Bildung und Forschung through grant No. 05P18PBCA1 and the EU H2020-MSCA-ITN-2018-813942 (EuroPLEx). We thank the HotQCD Collaboration for providing access to their latest data sets and for useful discussions.

REFERENCES

- [1] A. Bazavov *et al.*, *Phys. Lett. B* **795**, 15 (2019), [arXiv:1812.08235 \[hep-lat\]](#).
- [2] S. Borsanyi *et al.*, *Phys. Rev. Lett.* **125**, 052001 (2020), [arXiv:2002.02821 \[hep-lat\]](#).
- [3] F. Karsch, *PoS CORFU2018*, 163 (2019), [arXiv:1905.03936 \[hep-lat\]](#).
- [4] R.D. Pisarski, F. Wilczek, *Phys. Rev. D* **29**, 338 (1984).
- [5] O. Philipsen, C. Pinke, *Phys. Rev. D* **93**, 114507 (2016), [arXiv:1602.06129 \[hep-lat\]](#).
- [6] H.-T. Ding *et al.*, *Phys. Rev. Lett.* **123**, 062002 (2019), [arXiv:1903.04801 \[hep-lat\]](#).
- [7] H.-T. Ding *et al.*, *Nucl. Phys. A* **982**, 211 (2019), [arXiv:1807.05727 \[hep-lat\]](#).
- [8] D.A. Clarke *et al.*, [arXiv:2008.11678 \[hep-lat\]](#).
- [9] O. Kaczmarek, F. Karsch, A. Lahiri, C. Schmidt, *Acta Phys. Pol. B Proc. Suppl.* **14**, 291 (2021), this issue.
- [10] B. Friman, F. Karsch, K. Redlich, V. Skokov, *Eur. Phys. J. C* **71**, 1694 (2011), [arXiv:1103.3511 \[hep-ph\]](#).
- [11] J. Engels, F. Karsch, *Phys. Rev. D* **85**, 094506 (2012), [arXiv:1105.0584 \[hep-lat\]](#).